

PERFORMANCE WORK STATEMENT

FOR THE PROCUREMENT OF

**TRAINING, DOCTRINE, CAPABILITY DEVELOPMENT, ANALYSIS,
INSTRUCTION, ROLE PLAYERS AND SUPPORT SERVICES
AT FORT KNOX KY, AND FORT BENNING GA**

MANEUVER CENTER OF EXCELLENCE

INDEFINITE DELIVERY/INDEFINITE QUANTITY (ID/IQ) CONTRACT

Prepared by:

U.S. ARMY MISSION AND INSTALLATION CONTRACTING COMMAND (MICC)

MICC CENTER – FORT BRAGG

September 2010

TRAINING, DOCTRINE, CAPABILITY DEVELOPMENT, ANALYSIS,
INSTRUCTION, ROLE PLAYERS AND SUPPORT SERVICES
AT FORT KNOX KY, AND FORT BENNING GA

MANEUVER CENTER OF EXCELLENCE

The Maneuver Center of Excellence (MCoE) is a military entity created as a direct result of the 2005 Army Base Realignment and Closure (BRAC) Commission's decision to consolidate a number of schools and installations to produce "centers of excellence" by September 2011. This requirement will support the U. S. Army Maneuver Center of Excellence (MCoE) and its subordinate elements, the U.S. Army Armor School, formerly located at Fort Knox but relocating to Fort Benning, GA under the Base Realignment and Closure (BRAC) legislation, and the U.S. Army Infantry School at Fort Benning, GA. The requirement will also support MCoE virtual academies located at various Army Continental United States (CONUS) (Forts Bragg, Drum, and Stewart) and Outside Continental United States (OCONUS) Installations (as required). This contract may also include support to Training and Doctrine Command (TRADOC) Capability Managers (TCMs) at the MCoE across the full range of the TCMs responsibilities. This requirement is for an Indefinite Delivery/Indefinite Quantity (ID/IQ) Multi-Award Task Order Contract (MATOC) suite to acquire mission support services. The Government anticipates a maximum ceiling value of \$458M over the life of MCoE MATOC suite(s). This combined acquisition strategy/acquisition plan covers the solicitation, evaluation, and award of the MCoE MATOC and all resulting task orders.

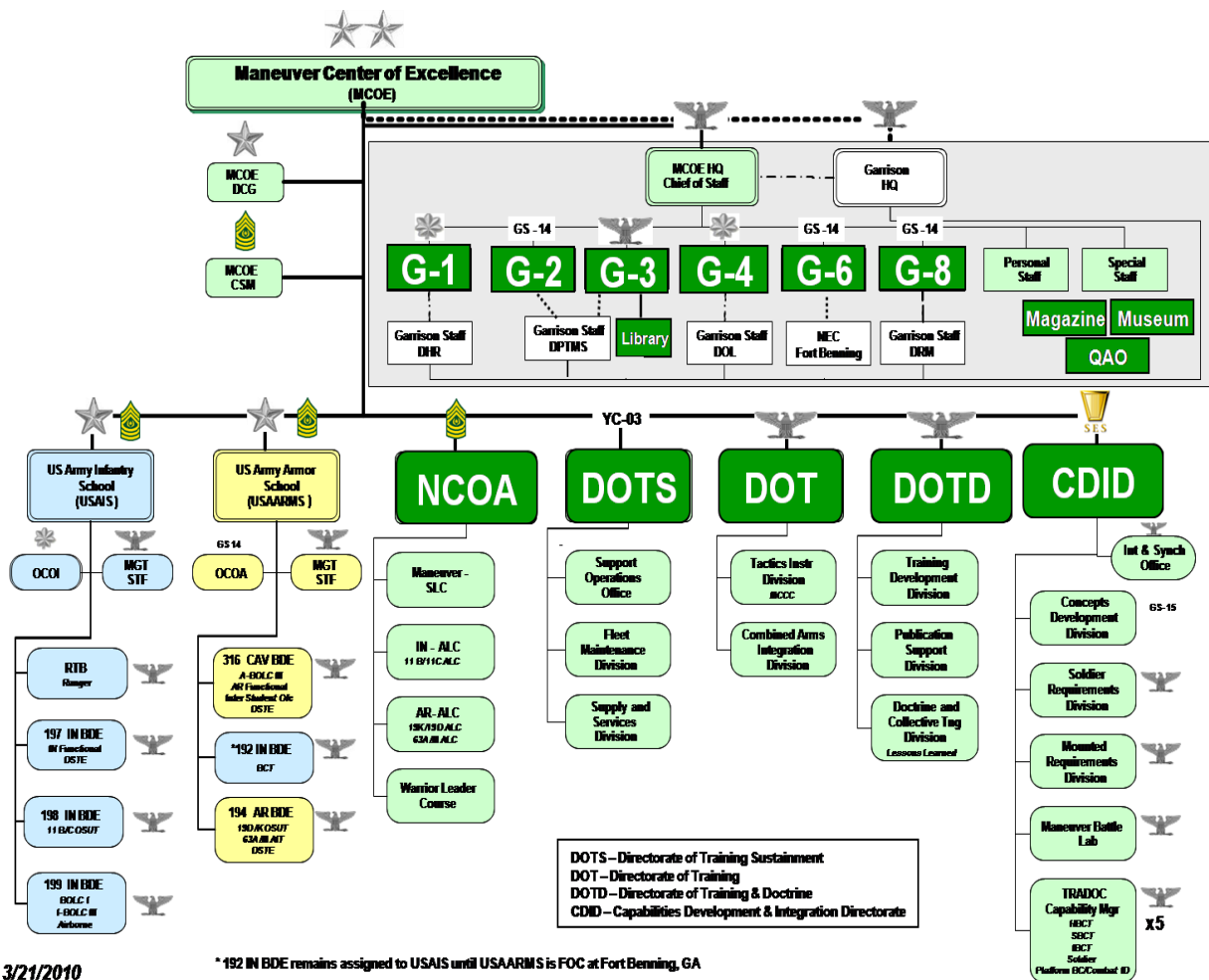
CUSTOMER MISSION: Fort Benning and the Maneuver Center of Excellence provides trained and adaptive Soldiers and Leaders for an Army at War, while developing future requirements for the individual Soldier and the Maneuver Force and providing a world class quality of life for our Soldiers and Army Families. The MCoE Command priorities are : (1) Fully Support an Army at War; (2) Prepare for the Future; (3) Enhance Quality of Life for Soldiers and Army Families; (4) Operate in a Command Climate of Teamwork, Discipline and Standards and Safety; (5) Fully Transition to the Maneuver Center of Excellence; and (6) Demonstrate Inspired Leadership. Implied in this is the responsibility to provide the TRADOC with a full spectrum of support in doctrine, training, capability development, and training support products for the Maneuver Force. The MCoE's function is to serve as the user representative in the development of training methodologies and products, concepts, doctrine, organizational requirements and materiel capability requirements for each functional area, as well as providing instructors to teach classes across the MCoE.

1) Fort Benning is the sixth largest installation in the United States with the third largest troop density. More than 120,000 service members, family members, retirees, civilian employees and contractors work, live and use services on Fort Benning. As Fort Benning transitions to MCoE, there will be more than 11,000 new jobs on the installation for Soldiers, Civilians and Contractors and more than \$3.5B in construction will be invested on Fort Benning through 2016.

2) The rapid growth of Soldiers, Families, and Civilians that Fort Benning will have to provide services for will grow faster than the means to support all of their needs. Currently Fort Benning conducts 61 courses and with the MCoE transformation, it will bring 39 new courses impacting contracted labor and services, over 200 new facilities, and 5 new maneuver training areas.

RESPONSIBILITIES: The MCoE has the responsibility to develop training strategies, concepts and products for the current and future forces, including the Heavy Brigade Combat Team, Stryker Brigade Combat Team, and Infantry Brigade Combat Team (HBCT/SBCT/IBCT), Airborne, Ranger and Special Forces as well as other proponent organizations such as the Battlefield Surveillance Brigade, (BFSB) and Cavalry organizations. The MCoE accomplishes this mission by the integration of virtual, constructive and live training; exploitation of existing and emerging technologies; and training, doctrine and capability development.

ORGANIZATION: Figure 1. MCoE Organization.



SCOPE OF REQUIREMENT: The MCoE requires contractor knowledge, expertise and services to support Department of the Army (DA) and Department of Defense (DoD) Agency initiatives for the Maneuver Force in the following seven Task Areas. These efforts may originate with any MCoE subordinate organization, Department of Defense (DOD) or Department of the Army (DA) Agencies working initiatives in support of the Maneuver Force. Individual Task Orders shall specify specific requirements in detail, along with milestones, deliverables, and other pertinent information relative to the task(s). Task Orders can be issued for current or emerging organizations.

1. General Technical and Analytical Support: Work generally consists of an issue for resolution, a briefing on field (doctrinal), manual review with recommendations for changes to be developed, capability documents review with recommended changes, an update of doctrine and training materials, support in the conduct of instruction at the MCoE and support of training and exercises by proponent units in the Active and Reserve Components. Attendance at meetings, briefings and conferences both locally and at remote locations, including possibly OCONUS, shall be required.

2. Training Development Support: This effort may originate with the Directorate of Training and Doctrine Development (DOTD) when working issues in support of the MCoE. Training development tasks generally require the conduct of research and writing resulting in revisions to existing Maneuver Force, DoD or DA training documents and materials. In some cases, the directed research shall result in new materials, institutional or unit training support packages, or programs of instruction developed or revised in accordance with (IAW) TRADOC Regulation 350-70, Systems Approach to Training Management, Processes, and Products, dated March 9, 1999, or the successor regulation. In some cases, the directed research shall result in new Combined Arms Training Strategy (CATS) or related publications. The primary product will be a Program of Instruction (POI). A POI is revised when there are significant changes projected in training strategy and course content, over 30% of the course lessons require revision and/or resources are affected, there are changes in POI data fields and/or other course resource requirements. Changes to course version lengths will only be implemented 6 months or more after TRADOC receives notification of such an action to preclude causing turmoil in the personnel community. POIs will be formatted and submitted in accordance with procedures contained in the Program of Instruction Management Module (POIMM) Users' Manual.

3. Doctrine Development Support: This effort may originate with the DOTD when working issues in support of the MCoE. Doctrine development tasks require the conduct of research and writing revisions to existing MCoE, DOD or DA doctrine as well as other documents and manuals. Functions include, but are not limited to (1) Assisting TRADOC's Combined Arms Center (CAC) in the writing, coordination, integration, and review of selected key (joint critical) Army doctrine; (2) Reviewing capstone and keystone and other joint critical Army doctrine to ensure proper linkages to joint doctrine; (3) Identifying joint critical Army manuals by publication to avoid duplication of effort with Combined Arms Doctrine Directorate (CADD), CAC and other branch proponent DOTDs; and (4) Participating in key Army working groups, doctrine working groups and meetings, symposiums, and councils that impact joint critical Army doctrine implications.

4. Capability Development Support: This effort may originate with the Capabilities Development and Integration Directorate (CDID) when working issues in support of the MCoE and TRADOC Regulation 71-20. Capability Development tasks shall require contractor subject matter expertise in the development of Tactical Ground Maneuver concepts; conduct of research, design, development, review and revision of organizational design/structures, including personnel and major equipment item requirements for MCoE proponent units at the Unit Reference Sheet (URS) level of detail; development of future operational capabilities and requirements in accordance with the Joint Capabilities Integration and Development System (JCIDS) (CJCSI 3170.01F dated 1 May 07) with updates; equipment support acquisition for developmental and non-developmental items; Post Rapid Field Initiative (RFI) items identification of materiel requirements and completion of acquisition, technical, and logistical requirements, as well as engineering, manpower integration and system safety issues; support for program management functions for some programs managed by the MCoE, as well as administrative and other non-personal services tasks required in support of the capability development process.

a) Concepts feed the JCIDS. Concepts illustrate how forces will operate, describe the capabilities required to carry out a range of military operations against adversaries in the expected joint operational environment (JOE), and how a commander, using military art and science, might employ these capabilities to achieve desired effects and objectives. They are the foundation for future requirements determination efforts. Concepts consist of future capabilities descriptions within a proposed structure of military operations for a period of 10-20 years in the future. Each concept describes problems to solve, the components of potential solutions, and how those components work together to solve the problems.

b) Experiments explore innovative methods of operating to assess their feasibility, evaluate their utility, or determine their limits to reduce risk in current operations and future development efforts. Experimentation identifies and verifies acceptable solutions for required changes in DOTMLPF to achieve significant advances in force capabilities. Experiments aid in validating the feasibility and utility of future requirements determination efforts. Concept development and prototype experiments help refine capabilities development and reduce risk to warfighters by providing credible analytical underpinnings to support decision making for force development. Experimentation applies structured assessment procedures to substantiate the effects of proposed warfighting capabilities using discovery, hypothesis-testing, and demonstration approaches as appropriate.

c) Requirements determination assesses required capabilities to identify gaps and develop DOTMLPF RIO solutions to resolve or mitigate gaps with unacceptable risk. It consists of determining, prioritizing, and documenting changes in DOTMLPF, as well as supporting analysis. These new requirements are the result of JCIDS capabilities-based assessments (CBAs), operational needs statements (ONS), operational lessons learned, and senior leader decisions to accelerate the fielding of future capabilities to the force. Initial capabilities documents (ICDs); capability development documents (CDDs); capability production documents (CPDs); joint DOTMLPF change recommendations (DCRs); and Army doctrine, organization, training, materiel, leadership and education, personnel, and facilities (DOTmLPE) integrated capabilities recommendations (DICRs) formally document these new requirements.

5. Training Instruction Support: It is expected that the MCoE Schools will require contractor subject matter experts in the development and presentation of instruction for selected resident courses and Mobile Training Teams (MTT) CONUS and/or OCONUS. Conduct of instruction shall generally be in support of the Officer Education System (OES), the Non-Commissioned Officer Education System (NCOES), Initial Entry Training (IET), and specialized training requirements or to assist in the training of new systems. Work shall be accomplished to standards IAW TRADOC Regulation 350-70, Systems Approach to Training Management, Processes, and Products, dated March 9, 1999, or the successor regulation.

6. Simulations and Analysis Support: Simulation and analysis tasks generally require contractor subject matter expertise for the MCoE and Proponent Schools in the set up, conduct, execution and documentation of live, constructive, and virtual (LVC) simulation exercises and analytical studies. The Integrated Training Environment (ITE) will link selected training aids (LVC), devices, simulators and simulations (TADSS); infrastructure; Battle Command/ Knowledge Management (BC/KM) systems; and a training scenario framework. Since 2002, the Army has been working to establish the ITE to enable more effective, efficient training in the resource-constrained ARFORGEN process. The ITE gained traction in October 2009, when the Live, Virtual, Constructive Integrating Architecture (LVC-IA) became a funded program of record (POR). Viewed as the "engine" of the ITE, the Integrating Architecture is the standards, protocols and design criteria that enable systems to communicate without excessive numbers of operators (low overhead), workarounds or specially designed computers. The Army plans to match LVC-IA with training infrastructure such as TADSS, land, ranges, Battle Command Training Capabilities and the Framework for Army Training and Education (training support packages, databases and common scenarios) to provide ITE core capabilities to 12 FORSCOM installations by fiscal year (FY) 16. Equipment with proprietary rights and /or serviced by other contract vehicles (PEO STRI) will not be included in this requirement

7. Support Services: Support Services tasks generally require contractor's support in the performance of non-personal services administrative and clerical tasks associated with in/out-processing, student recordkeeping, file maintenance (either in hard copy or digital) and similar activities. Also included in this category would be technical and graphics editors to review publications and other technical documents developed in support of the overall ID/IQ products.

DELIVERABLES: Individual Request for Task Orders Response (RTOR) will provide specific information in detail, along with milestones, deliverables, and other pertinent information relative to the requirement (Additional Information is provided in the section H.1.8. Reporting Requirements).

Training support package deliverables shall be provided in electronic format (e.g. CD ROM), or other appropriate media, as appropriate to and specified in the TOs with paper copies as required. Deliverables associated with the conduct of institutional or unit instruction/exercises in accordance with approved training support packages and lesson plans.